

# SAFETY LOADER™

Loading Tower



A CLEANLY DESIGNED, QUICKLY ERECTED  
TANK CAR-TRUCK LOADING TOWER.

FROM

J  
B  
C

# **SAFETY LOADER™**

## **Loading Tower**

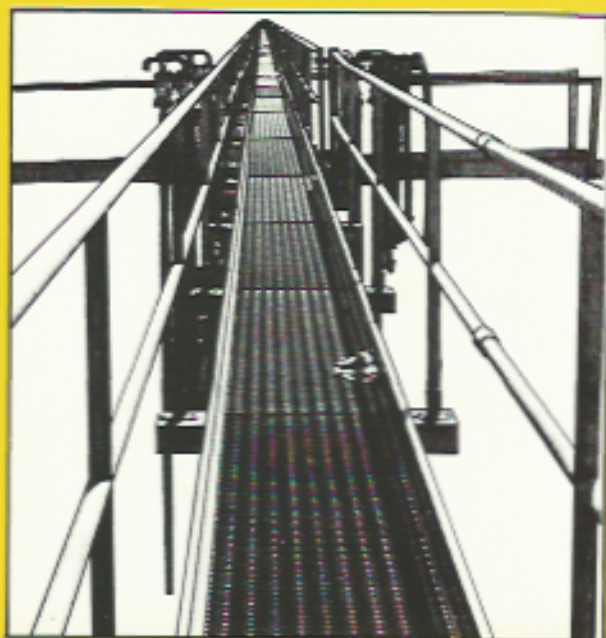
### **FEATURING**

---

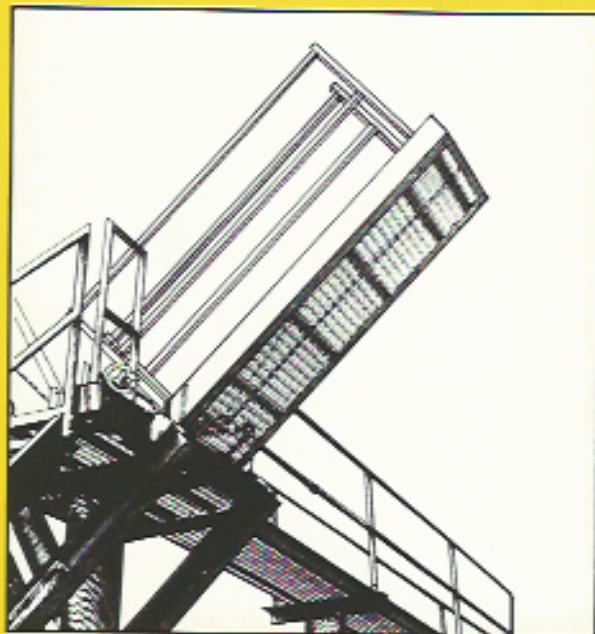
- ❑ 4 components - column, stairs, platform and gangway. Quick on-site erection.
- ❑ Counter-balanced gangway.
- ❑ Stairway available in any position.
- ❑ Unique floor and stair design prevents moisture retention.
- ❑ Meets current O.S.H.A. requirements.
- ❑ Platform accommodates single or double drop gangways.
- ❑ 1½ inch square tube handrails.
- ❑ Functions perfectly without electricity or hydraulics.
- ❑ Uses Grip-Strut Safety Grating on all walking surfaces.
- ❑ Easy raising and lowering of gangway.
- ❑ **EASE OF INSTALLATION -  
CONNECT IN 45 MINUTES OR LESS!**



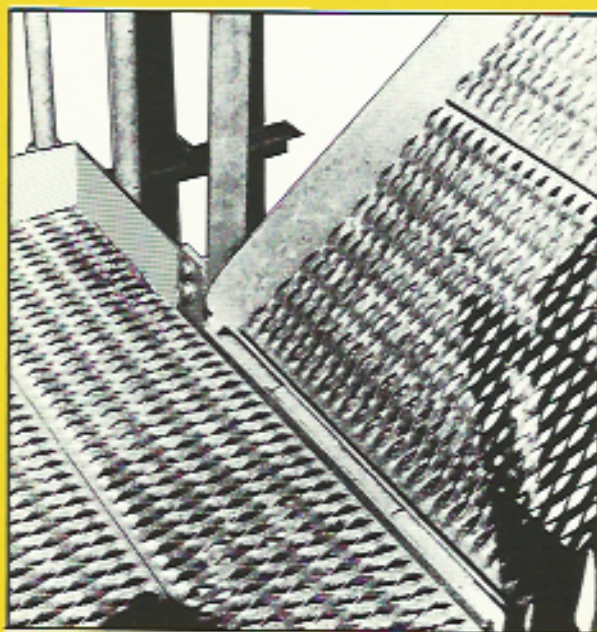
Walkway connecting multiple spots



*The Loading Tower System with  
All the Advantages...* **SAFETY LOADER™**  
Loading Tower



Counter weighted gangway

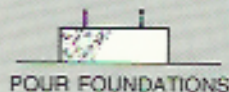


CONTACT JBC ENTERPRISES, INC.



DALLAS: (214) 340-1510  
 FAX: (214) 340-9280  
 HOUSTON: (713) 869-4904  
 FAX: (713) 869-4907

## ERECTION SEQUENCE



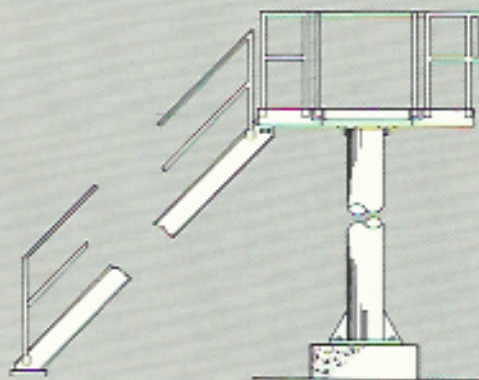
**1** ASSEMBLE PLATFORM TO COLUMN WITH  $\frac{3}{4}$ " x 2" A-325 BOLTS.



**2** ERECT PLATFORM-COLUMN ASSY. AND SECURE WITH 4, 1" ANCHOR BOLTS.

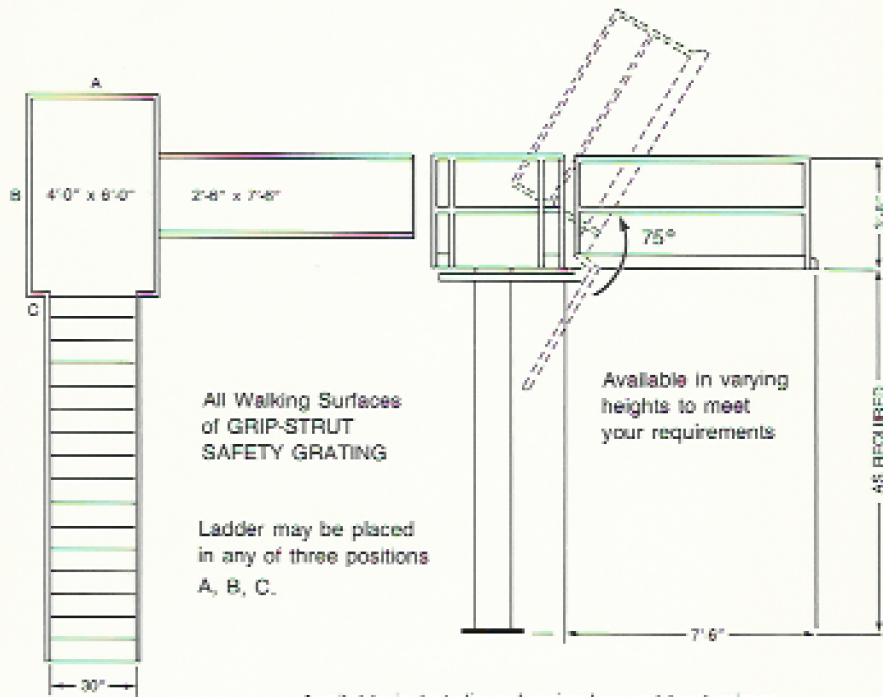


**3** HOIST GANGWAY INTO POSITION AND SECURE WITH HINGE PIN.



**4** ATTACH STAIR TO PLATFORM WITH 4,  $\frac{3}{4}$ " A-325 BOLTS AND TO FOUNDATION WITH 4,  $\frac{5}{8}$ " ANCHOR BOLTS: THEN BOLT PRE-ASSEMBLED HANDRAIL TO PLATFORM AND STAIRS. ANCHOR BOLTS SUPPLIED BY OTHERS.

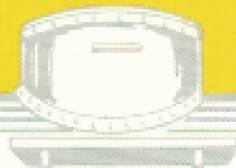
## DIMENSIONAL INFORMATION



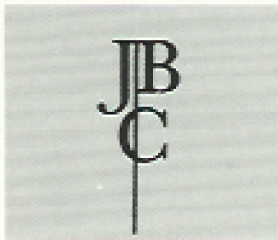
Available in hot dip galvanized or red lead primer.

# SAFETY LOADER™ Loading Tower

PATENT NO. 4,171,550



FOR ADDITIONAL INFORMATION CONTACT:



JBC ENTERPRISES, INC.